



COMPANY PROFILE 2025



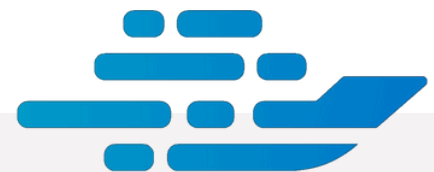


ABOUT US

Archimede Marine, an engineering company established in 2013 as 3J Marine, operates in the field of naval design and offers a comprehensive range of services.

Our team of highly specialized professionals offers shipyards and shipowners a complex skill set honed in different areas of design and shipbuilding.

Our expertise lies in the research and development of innovative technological solutions that are both economically and environmentally sustainable.





OUR SERVICES

Our know-how applies to any project, from basic engineering to executive design, from 3D laser scanning to consulting, and much more.

Regardless of the request, Archimede Marine provides a tailored and customized service, maximizing time and resources and by providing guidance and support throughout the implementation process.



OUR SERVICES



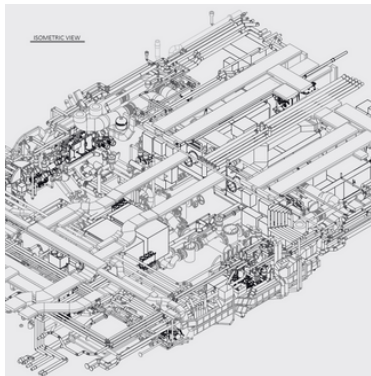
**BASIC DESIGN AND
ENGINEERING**



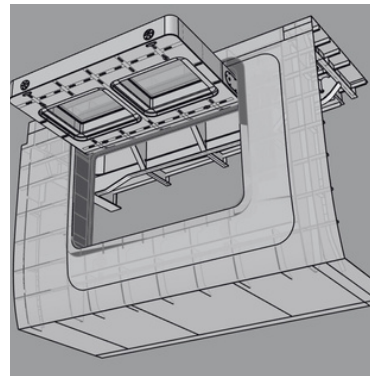
**3D LASER
SCANNING**



**PROJECT
ENGINEERING &
CONSULTING**



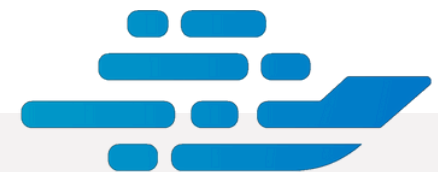
**SYSTEMS
EXECUTIVE
ENGINEERING**



**STRUCTURES
EXECUTIVE
ENGINEERING**



**OUTFITTING
EXECUTIVE
ENGINEERING**



STABILITY EVALUATION

- Hull design and fairing
- Intact and Damage stability evaluation
- Stability documents (T&S booklet ecc.)
- Fixed ballast calculation
- Freeboard calculation
- Inclining test experiment report

SCANTLING AND ARRANGEMENT PLANS

- Class drawings
- Tank capacity / WTB plan
- Freeboard plan
- Lines plan

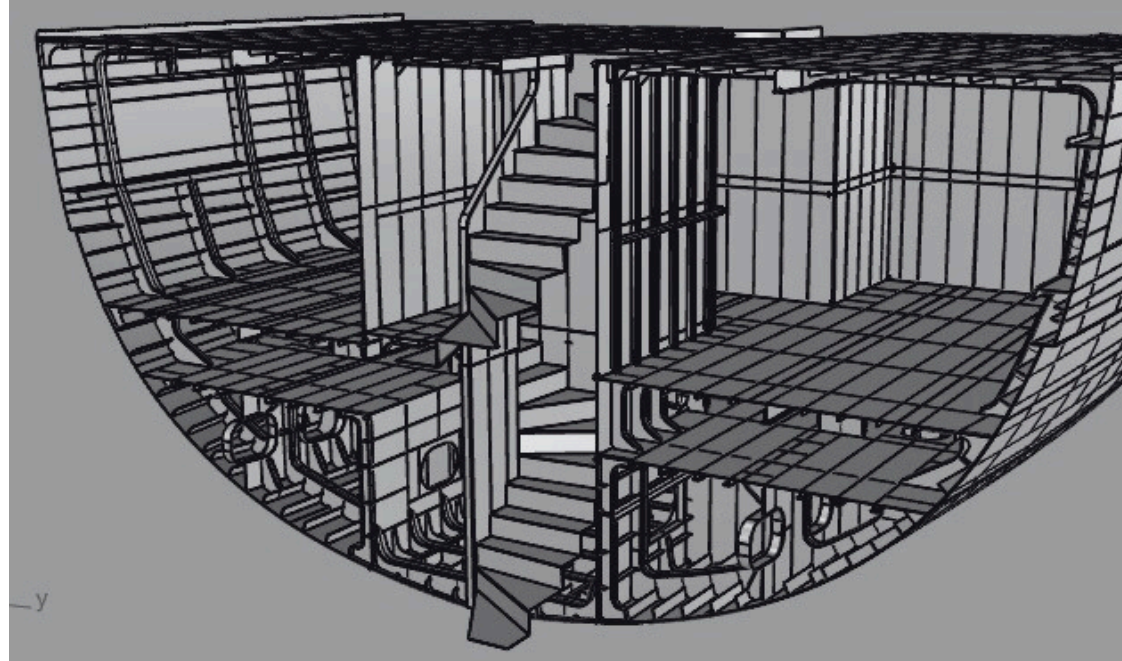
ENGINEERING CALCULATION

- Weight estimation
- Propeller matching and range calculation
- Check for transportation of cargos on barge
- Shaft line alignment
- Tonnage calculation

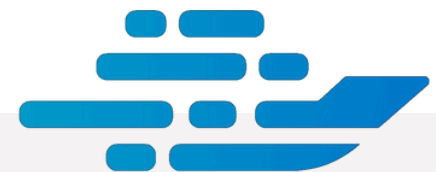
STRUCTURAL CALCULATIONS

- Hull and appendages class scantling calculations
- FEM analysis
- Steel structures analysis

...and more



BASIC DESIGN AND ENGINEERING



NESTING

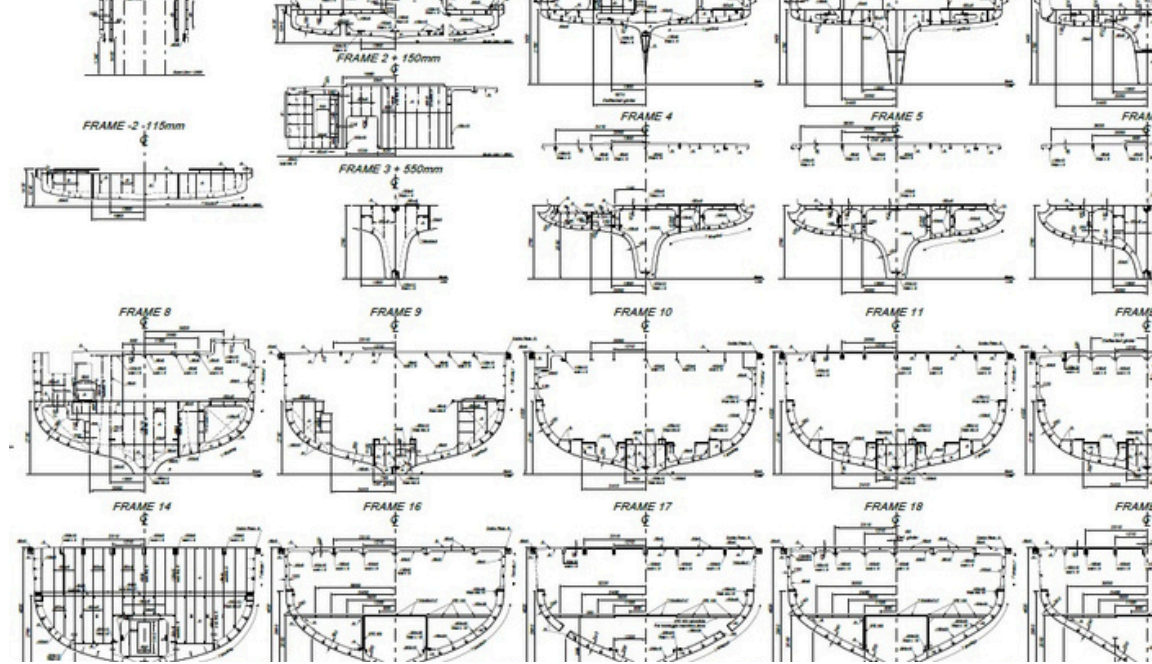
- 2D & 3D Block modelling
- Plate Cutting
- Profile list
- Sketch Assembly
- COGList, PartList & Sketch profiles

STRUCTURAL BLOCK MODELLING

- 3D Block Modelling structure
- Interface block Review

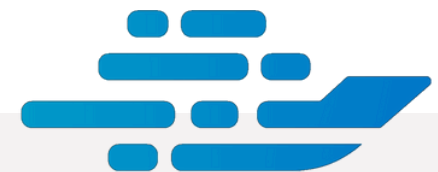
3D MODEL ENGINEERING

- Surface development for shipyard
- Outfitting interface & piping
- Details definition



STRUCTURES EXECUTIVE ENGINEERING

...and more



DECK EQUIPMENT ARRANGEMENT

- Windlass and Capstain
- Bollards and Fairleads
- Teak plan and details

INTERNAL OUTFITTING

- Watertight Door/Hatch
- Wheathertight Door/Hatch
- External Door

HULL OUTFITTING

- Underwater Lights
- Draft Mark
- Cathodic Protection
- Manholes and ladder for tanks access

EXTERNAL OUTFITTING

- Awnings
- External Grids
- Windows Plan and External Rails
- Minor hatches

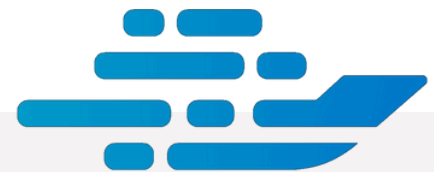
FIRE & SAFETY ARRANGEMENT

- Safety Plan
- Lifebuoy
- Liferaft
- Pilot Embarkation Bulwark Door

...and more



OUTFITTING EXECUTIVE ENGINEERING



P&ID

- 2D P&ID Drawing for all systems on board, according to Class Notation and Main Rules
- Remarks Management for final approval

3D SYSTEM COORDINATION

- 3D Model of Pipes, Duct and Cable Ways
- 3D Model of Net Spaces
- Cloud platform for sharing 3D Model

2D DOCUMENTS FOR CONSTRUCTION

- Drawings for boring, structural ducts, tank penetration and overboards installation on board
- Workshop documents for pipes and ducts prefabrication
- Drawings for pipes, ducts and cableways installation on board

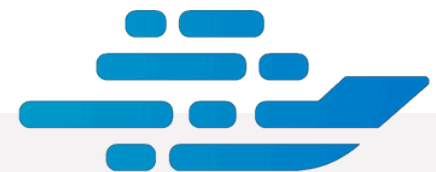
TECHNICAL SPACE ARRANGEMENT

- Technical Dunnage
- Machinery Foundation
- Lifting points for Machinery Embarkation

...and more



SYSTEMS EXECUTIVE ENGINEERING



REVERSE ENGINEERING

Creating a digital 3D model of an existing physical object using scanning techniques and data acquisition for purposes of design, analysis, or reproduction

DIMENSIONAL CHECK

Dimensional inspection involves checking the dimensions and accuracy of the 3D digital model compared to the scanned physical object

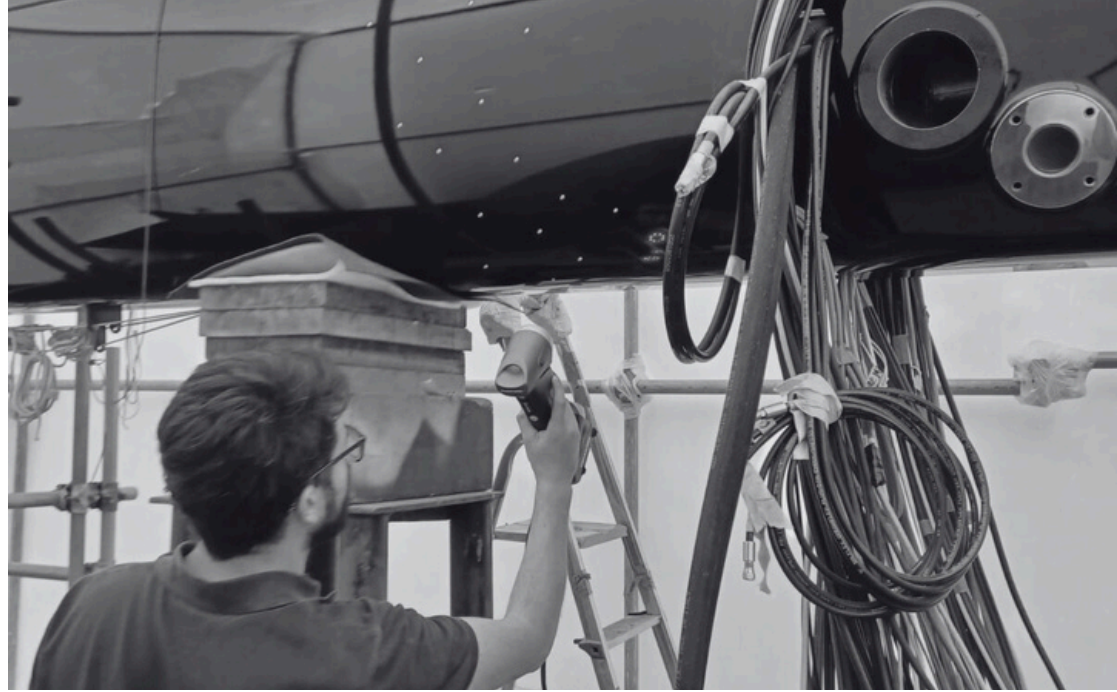
DIGITAL TEMPLATE

To create or verify the shape, dimensions, and accuracy of an object, essential for ensuring consistency and precision in production processes

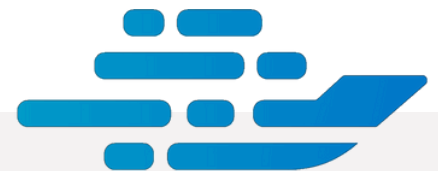
NDT TEST

Measurement of component deformations in real time with optical tracking systems for validation and certification compared to 3D model

...and more



3D LASER SCANNING



PROJECT ENGINEERING

- Project management
- Engineering and design
- Interplay with the ship classification societies
- Communication with the customers

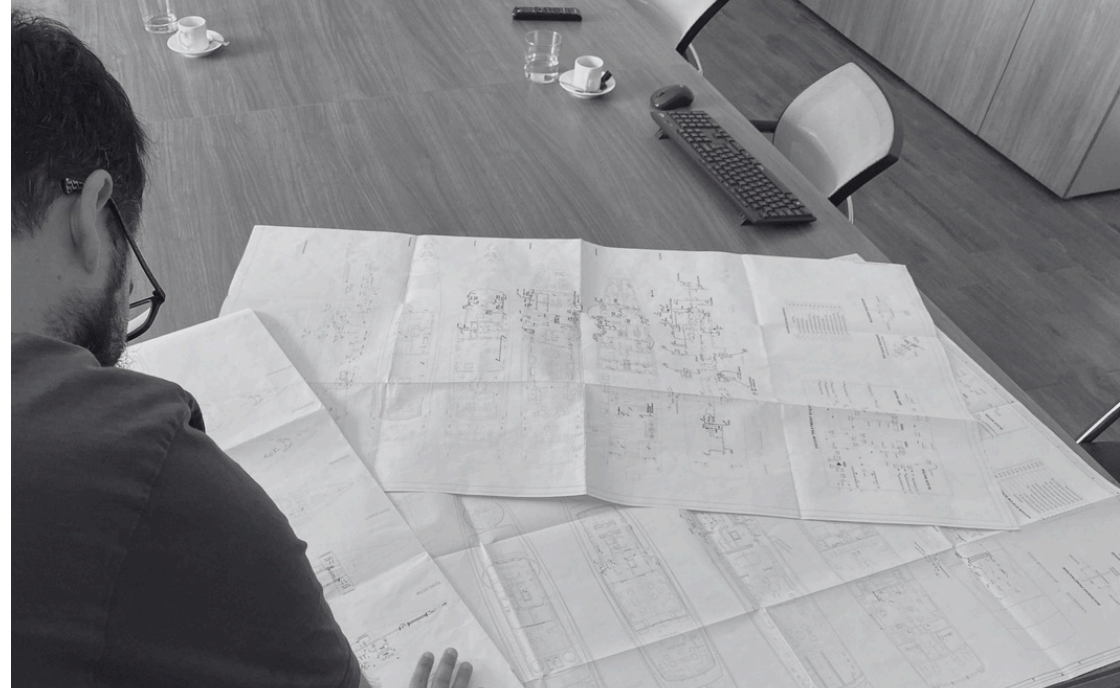
CONSULTING

- Technical consulting for shipping companies, brokers, law firms, insurers, banks and financial institutions
- Examination of the condition of the boat
- Detailed analysis of the hull and its installations
- Accurate dimensional and photographic survey

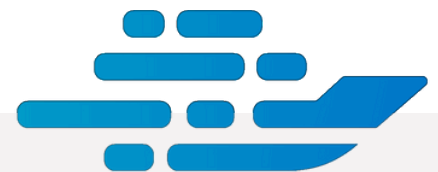
VESSEL ROLL-ON AND LAUNCHING ON FLOATING DOCKS

- Docking plans
- SPMT modules arrangement
- Roll-on / launching equilibrium and stability calculation
- Towing plan

...and more

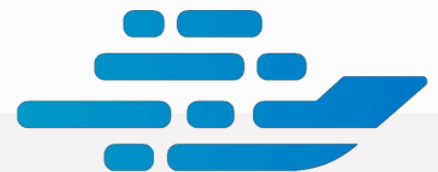
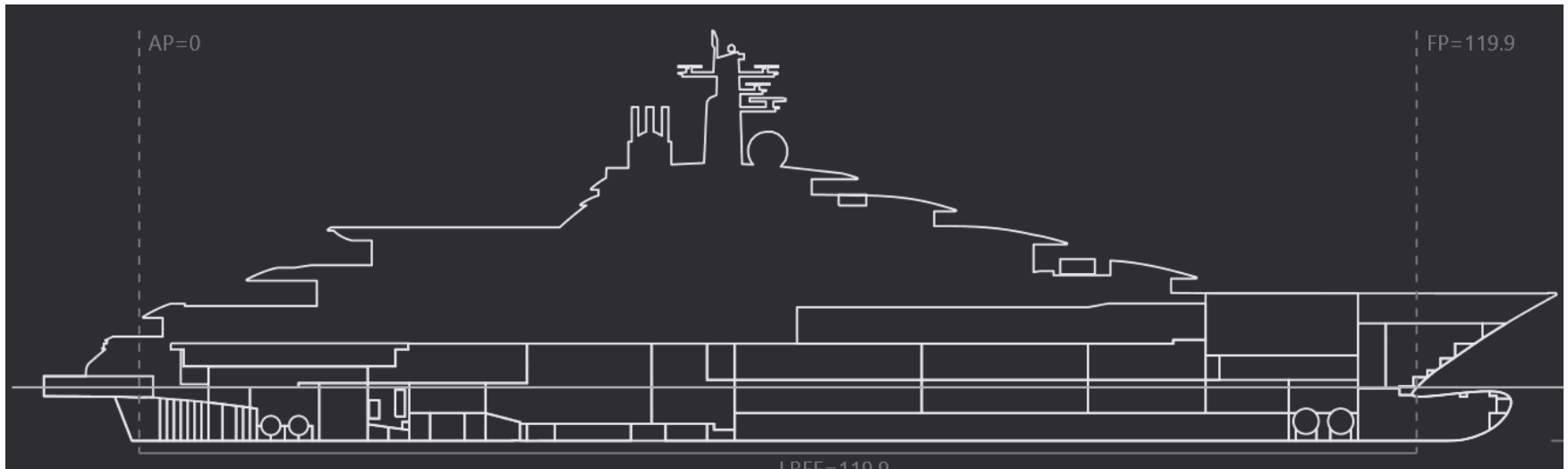


PROJECT ENGINEERING & CONSULTING



TECHNOLOGY AND INNOVATION

Our continuous update ensures we stay innovative and enables us to enhance efficiency and quality. We use the most advanced softwares including RHINOCEROS, CADMATIC, NAPA, BRICSCAD, MAXSURF, SOLID WORKS, FEMAP, CREAFORM etc. to offer our clients the best results by optimizing time and costs.



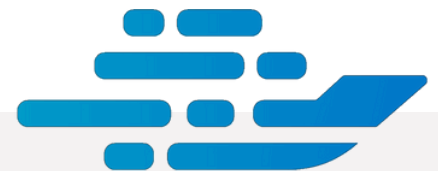
KEY PROJECTS



We have completed significant projects that improved the engagement for our clients.

We are proud to have worked with the most important shipyards and companies of the italian yachting industry.

From the concept and structural planning to engineering and the study of on-board systems, our projects showcase our ability to give shape to ideas and deliver concrete solutions.



PERFORMANCE METRICS



+100 Projects Completed
in 2 years: Delivering
successful projects



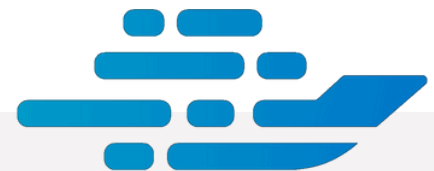
+30 Employees: Driving
innovation and
excellence



+5 Strategic
partnerships in 2025:
Expanding our clients
base



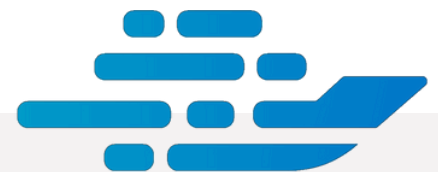
+50 Ongoing Projects:
Sustaining growth
into the next year





CORPORATE SOCIAL RESPONSIBILITY (CSR)

Our CSR programs, such as company welfare, employees training on new softwares, and eco-friendly approach, positively impact the community and the environment. We are committed to sustainability and social responsibility.



CONTACTS



ARCHIMEDE MARINE
INNOVATIONS & SOLUTIONS
Via Starza, 47 – 84012 Angri (SA) - Italy



+39 081 314 3724



info@archimedemarine.it



archimede-marine

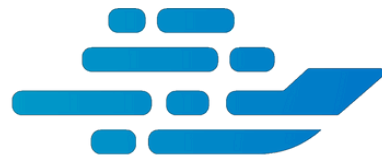


archimede_marine



www.archimedemarine.it





ARCHIMEDE
MARINE